

# Who Holds Me Like Light Holds the Dawn

Mix Media Painting

Material: watercolor, Acrylic Paint, Clear plastic, Air dry clay

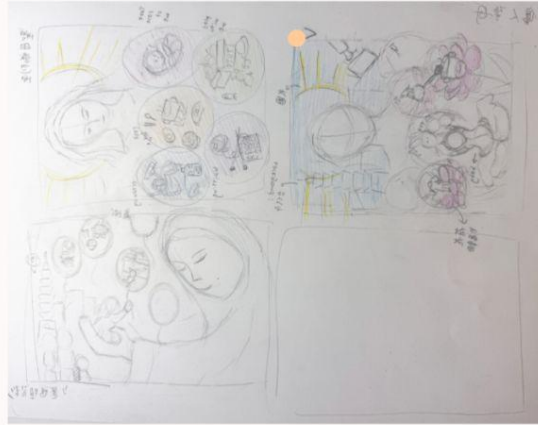
Dimensions: 13"x18"x2"

Year: 2025

Description:

Before I could even speak, someone led me to my beginning. My nanny reminds me of 'Maria'—a symbol of unconditional protection and quiet, unwavering love. During my early years in Taiwan, she cared for me not simply as a caretaker, but as family. She provided warm meals and constant companionship, tending to every small need with patience and devotion. Like a gentle embrace, her presence created a sense of safety before I even had the words to describe it. Through her care, I learned to trust and to find the comfort I needed to explore the world. This work honors the light she gave me—soft, selfless, and lasting.

## Brainstorm



# Under the Sky My Mother Mended, My Path Was Born

Watercolor Painting

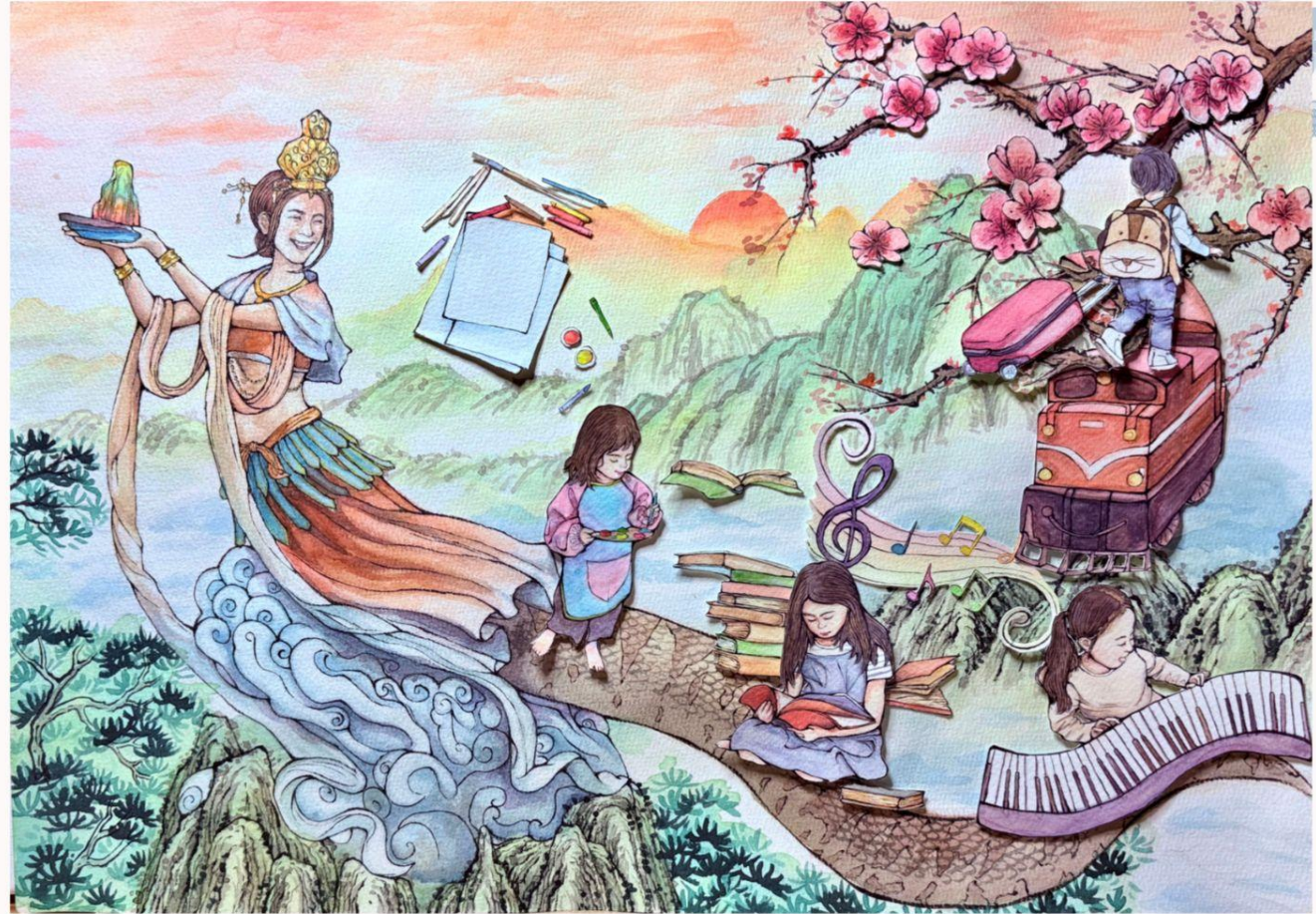
Material: watercolor, ink

Dimensions: 21" x 15"

Year: 2025

Description:

I portray my mother as Nüwa, the Chinese goddess who created humanity with a mother's gentle hands and boundless love. When the sky broke, she sacrificed herself to protect her children, mending the sky to keep the human world safe. In mythology, Nüwa repairs the world after a catastrophe. In my life, my mother held our family together through hardship. While working tirelessly to support us, she never stopped nurturing my growth. She sacrificed her own freedom so I could explore the world. Watching me grow, she gently helped me shape my future.



# The Spear of Courage

Mix Media Painting

Material: watercolor, Acrylic Paint, Stone, Wood, Clay, Wood stick

Dimensions: 12"x17"x1.5"

Year: 2025

Description:

In this work, I depict my sister as Athena, the Greek goddess of wisdom and courage, who guides others through uncertainty with clarity and strength. Like Athena, she has been both mentor and shield in my life. She taught me practical skills and ways of thinking that carried me through moments of fear—especially when I transition to life in America, where language, culture, and isolation overwhelmed me. Rather than fighting battles for me, she showed me how to face them. Her support steadied my hand and pushed me forward until I was ready to sail into the waves alone.



# The Blooming Self

Mix Media Painting

Material: watercolor, Acrylic Paint, plastic flower, plastic leaf

Dimensions: 18"x22"x5"

Year: 2025

Description:

I seek to understand myself through growth and the discovery of who I am. I use the blooming flowers to represent an open-minded approach to the world—exploring what I love and finding my own path. Behind this growth are the women in my life: my mother's love and sacrifice gave me roots, my sister's guidance taught me to grow, and my nanny's care reminded me I am never alone. Their support shaped me into the person I am today, giving me the courage to reach toward the future with curiosity and hope.

## Brainstorm



# Twin: Under the Same Sky, Becoming Ourselves

Digital Painting

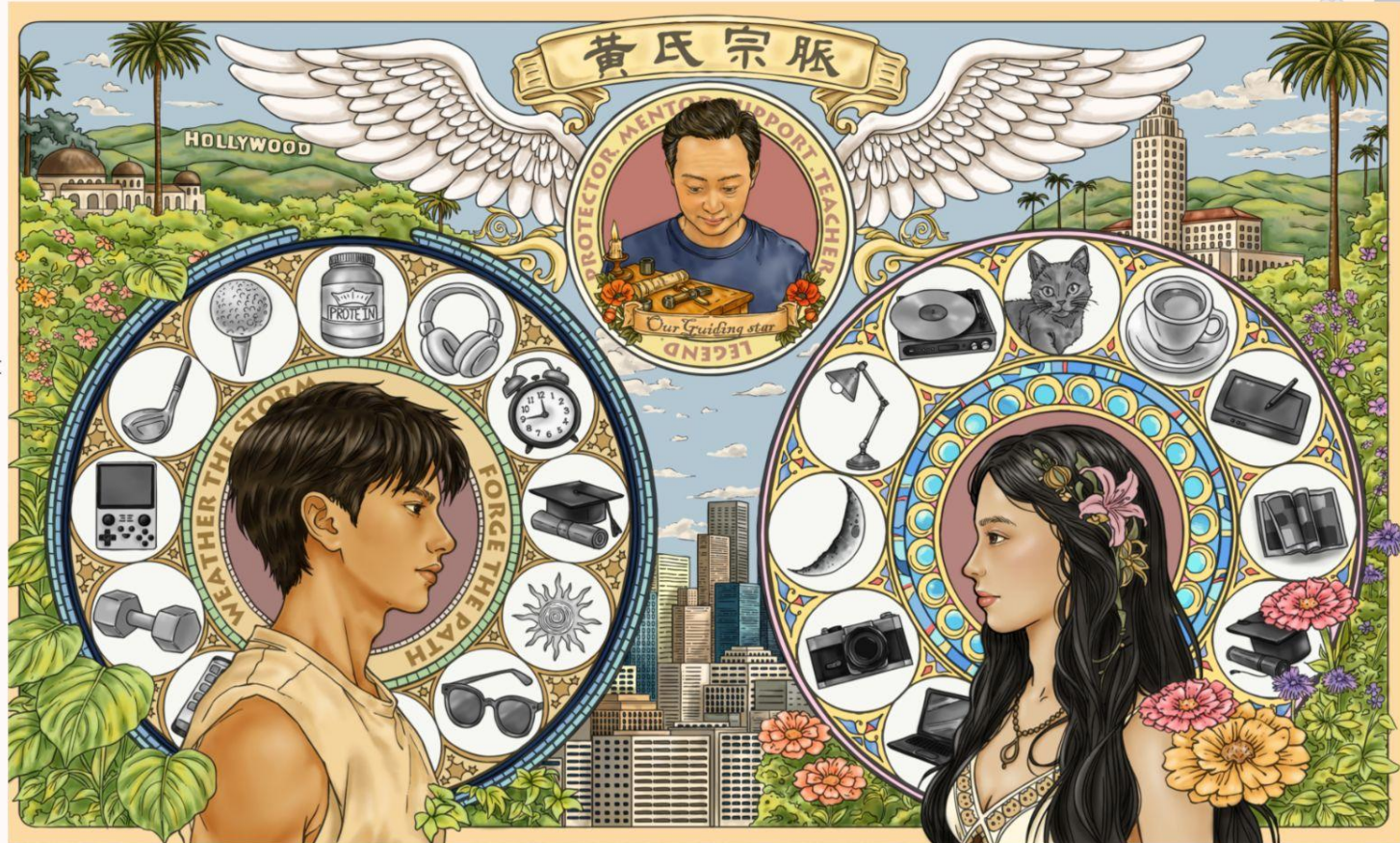
Material: Photoshop

Dimensions: 10"x16"

Year: 2025

Description:

My twin brother is my steadfast support—the person who knows me most deeply. We move through the world with a shared understanding of each other's dreams and face life's sorrows in tandem. He is present in all our laughter and every struggle. Behind us stands our father, like a guardian angel, working tirelessly while keeping a watchful eye over our shoulders. His strength shapes our future and gives us the courage to chase our dreams. Together, we navigate the world as a family, bound by love and a lifetime of shared experience.



# When Love Hurts

Mix Media Painting

Material: watercolor, Metal Chain, Nail Screw, hot glue, toothpick

Dimensions: 16"X21"X4"

Year: 2025

Description:

After immigrating to America, my parents were locked in constant arguments, driven by everyday pressures—our education, future careers, and the relentless pursuit of 'success.' These conflicts didn't stay between them but seeped into the inner world I shared with my twin brother. Depicted as a cat and a dog, we appear small and exposed, absorbing tension meant for adults. The gold chains symbolize the heavy expectations placed upon us: to be talented, adaptable, and financially secure. Beneath this weight, love became conditional, and we learned to grow quietly, carrying anxiety long before we understood its source.



# The Price of Tomorrow

Digital Painting

Material: Photoshop

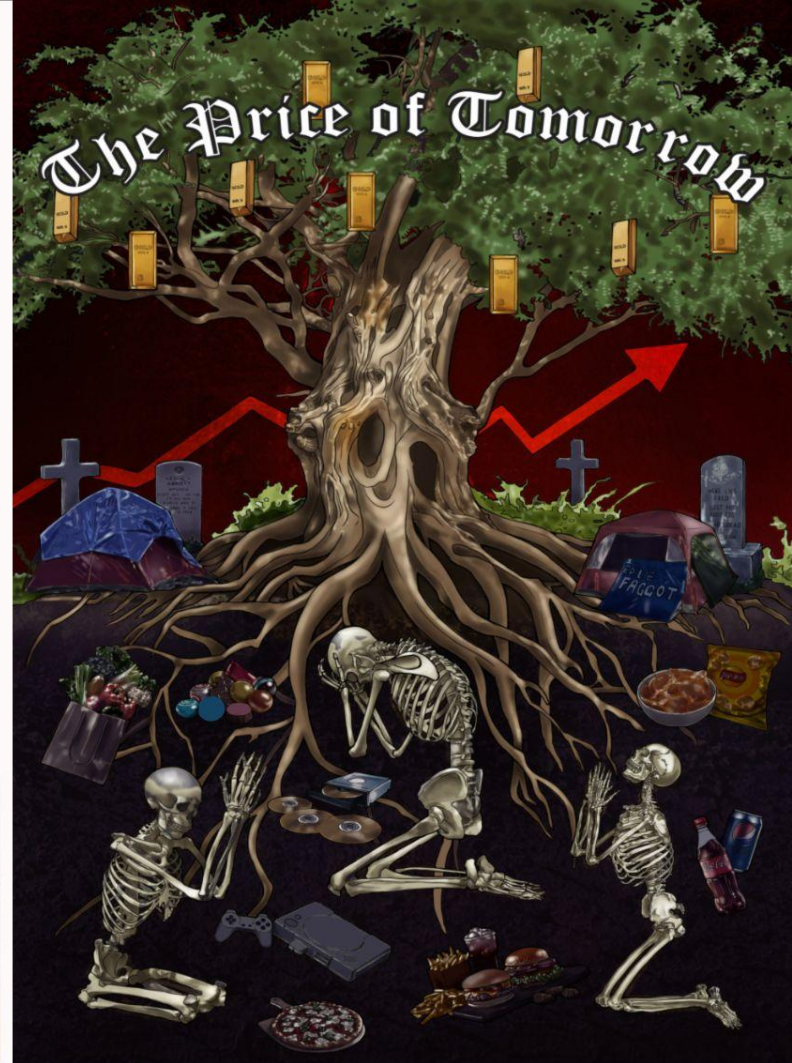
Dimensions: 15"x10"

Year: 2025

Description:

In recent times, inflation now defines our daily reality, forcing families like mine to reclassify essentials as luxuries and struggle just to stay afloat. Every decision is shaped by relentless price hikes, making daily choices feel like sacrifices. Many, including us, are left with only cheap alternatives and short-term fixes. The widening gap between the rich and the poor drains the majority's energy and hope. Government policies may seem distant, yet their consequences shape our homes, alter our priorities, and erode our dreams. This work embodies the tangible weight of inflation—a burden that dims the prospect of a secure future.

## Brainstorm



# Hero Cover: Blade Aria

Digital Painting

Material: Photoshop

Dimensions: 12"X16"

Year: 2025

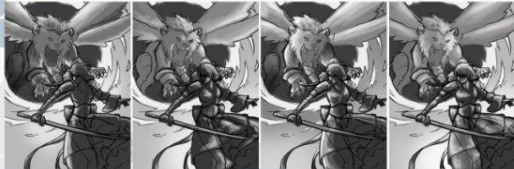
Description:

I approached this as if I were designing for a real game or anime series, which helped me focus on the tone and worldbuilding. My goal was to pack the whole narrative into one image that hooks the audience and pulls them into the story right away."

## Sketch

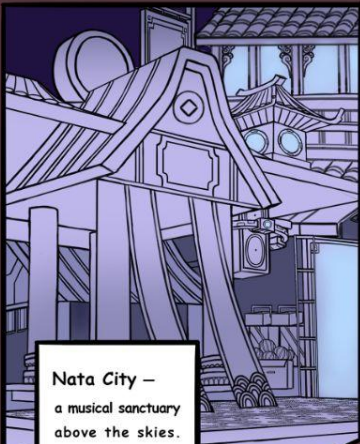


## Lighting



## Color comp





Nata City – a musical sanctuary above the skies. Empowered by the Fountain of Sound, its harmonies resonate through all things, and the melody never ceases.



Himeko – the last royal heir, steps out of hiding to reclaim her city's freedom...



But now, darkness begins to consume this land... To seize the power of the Fountain of Sound, the dark organization "Chaos Soundwave" staged a coup, plunging the city into silence and fear.



The melody of this city... will not end here!



Feeble humans...

Sound exists only to serve the strong.



SHHHH...  
ROOOAAARRR!!

Let me bind you in chains of fear— and bring you under my rule!





You only know how to crush others with noise... but you'll never understand that true music is born from hope and connection!

Naivel True power is the rhythm that can control everything!



BOOOOM!



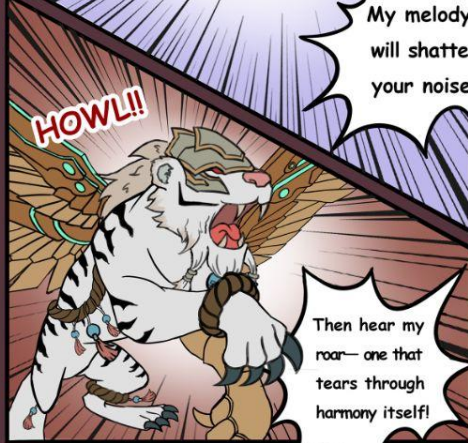
WHIZ!



My melody will shatter your noise!



SHHH



HOWL!!

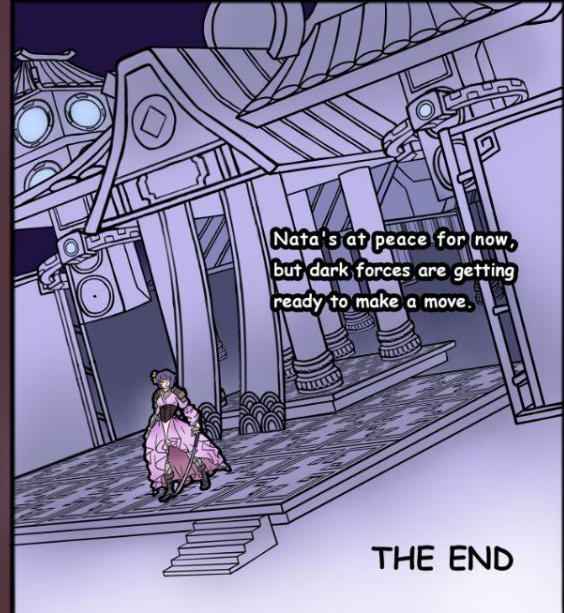
Then hear my roar— one that tears through harmony itself!



GRIP...



I will compose Nata's final symphony and you'll be silenced by its end!



Nata's at peace for now, but dark forces are getting ready to make a move.

THE END

# Blade Aría

In 3075, war reduced Earth to rubble. Humanity discovered **Resonance Energy**—power from the human voice that changed everything. From the ruins, humanity built **Nata City**, a sky refuge safe from radiation and **The Devourers**, who craved Resonance Energy to silence the world. Under Starveil rule, peace reigned but peace was fragile. The Devourers attacked, nearly erasing the **Starveil line**—except for one heir. **Himeko**, the last heir, hides in Nata's ruins, waiting to reclaim the Resonance Core and restore hope.

# Himeko

## The Songblade Dancer

Himeko dreamed of becoming a **swordswoman**. But at age ten, that dream was shattered when the Devourers attack Nata City. The war took everything from her—her parents, her right arm, and both her legs. She did not perish. Rebuilt through biomechanical reconstruction and honed by a decade of brutal training in the shadows, she has awakened her power to control the Resonance Core. Now she has returned. No longer just a performer but also the shield of Nata City.



## Silhouettes



Design Scheme



Action pose



## Facial expression



## Color comp



## 3 Points turn



Himeko - 23, stands as the last scion of the Starveil Dynasty and a master of the Resonance Core.



# Silencefang

The Warden Tiger

Silencefang is an ancient aberrant beast summoned by the Devourers, said to originate from the Soundless Abyss.

Silencefang's power was sealed by the Devourers' leader, and he was sent as a spy, appearing as a kitten to gain Himeko's trust and secretly gather information. The Devourers planned to use this intelligence to steal the Resonance Core and Himeko's powers.

When their attack began, the seal was broken. Silencefang returned to his true form—a colossal White Tiger—confronting Himeko in battle and revealing his betrayal.



## Silhouettes



## Design Scheme



## Action pose



## Color comp



## 3 Points turn around



Silencefang can devour sound waves and distort melodies, embodying the concept of silence as destruction.



When Silencefang's power is sealed, he takes the form of a kitten. Once released, he returns to his true form: a White Tiger.



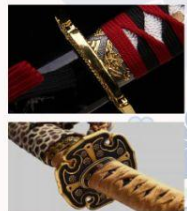
# Resonator

The Katana

The Resonator is a high-tech microphone that transforms into a Katana at the press of a button, turning sound into weaponized force.

It gathers sound waves and converts the user's singing into Resonance Core energy. In its blade form, the weapon releases a devastating attack known as **Resonance Cleave**—a sonic slash capable of cutting through even the strongest enemies.

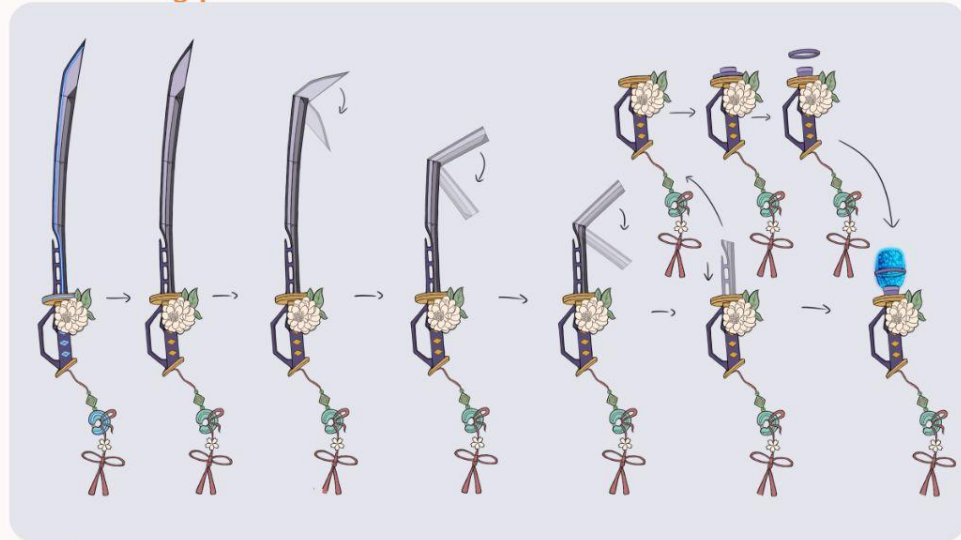
## References



## Silhouettes



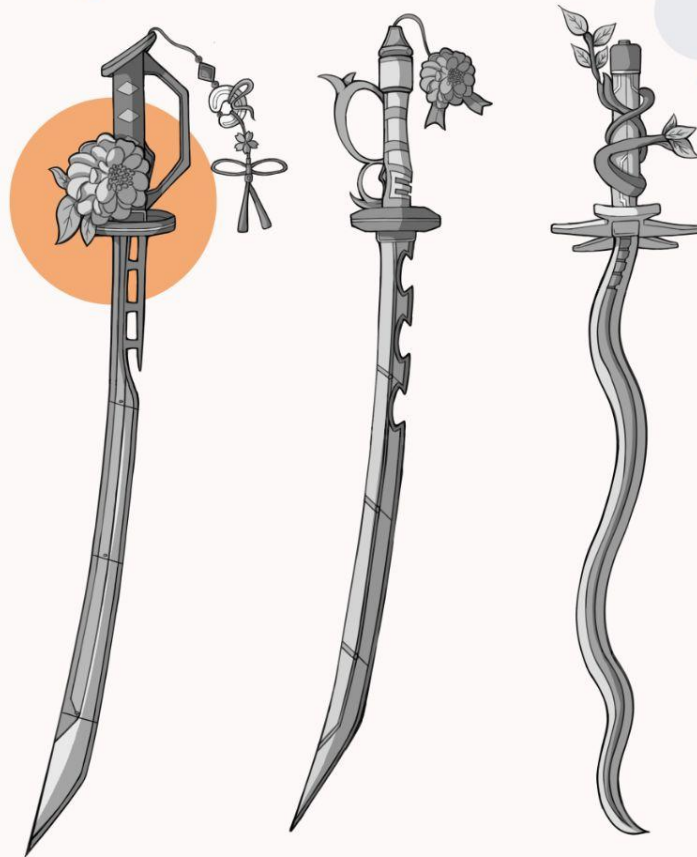
## Disassembly process



## Color comp



## Design Scheme



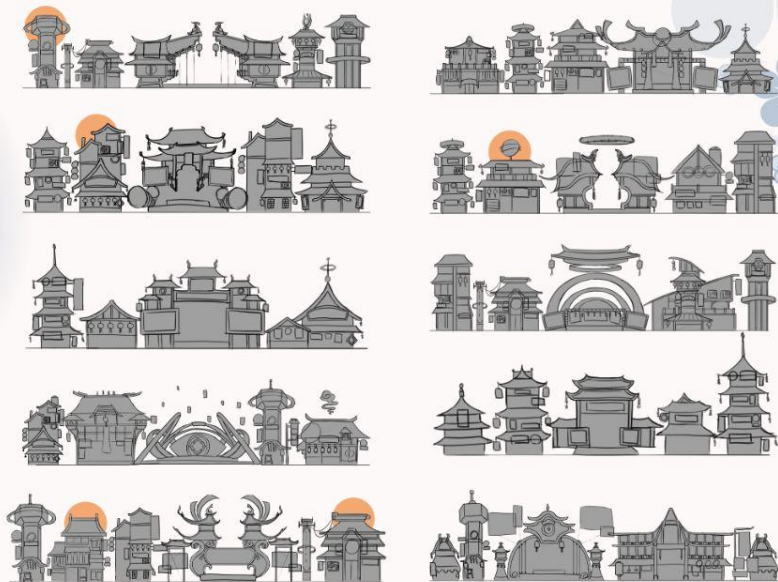
# The Central Stage

The Heart of Nata

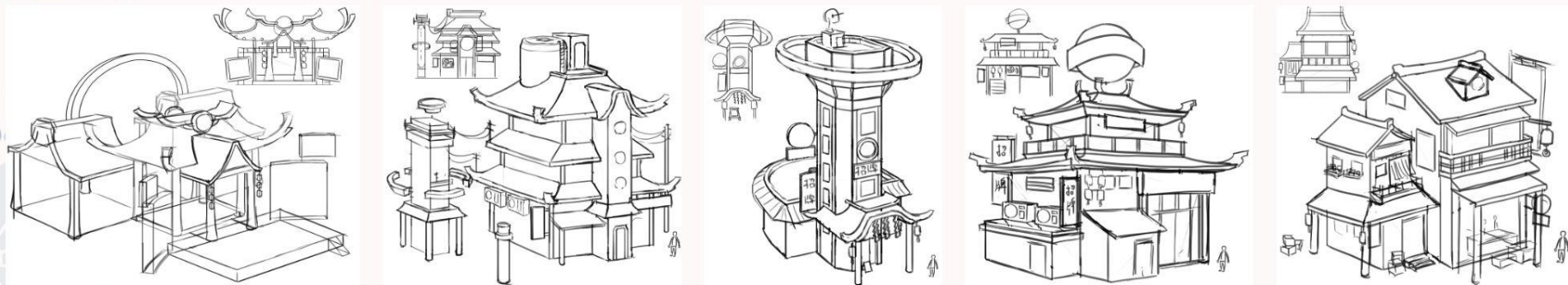
The Central Stage lies at the heart of Nata City and houses the Resonance Core, which serves as the city's primary energy source. Every few years, the city hosts a Grand Tournament, a beacon of pride and hope for its citizens. To stand on this stage was once Himeko's dream—the place she aspired to ascend as a performer. Now, she must turn this sacred ground into the final battlefield against the Devourers. Only here, close enough to the Resonance Core, can she unleash her full power.



## Silhouettes



## Sketching



# Dwelling Designs



Market



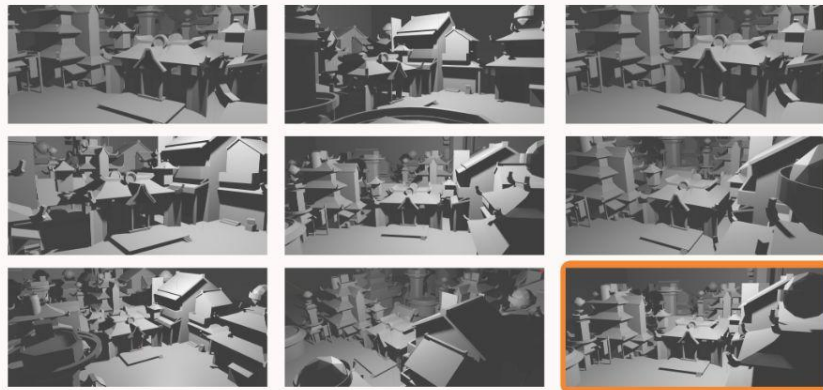
Restaurant



Center stage



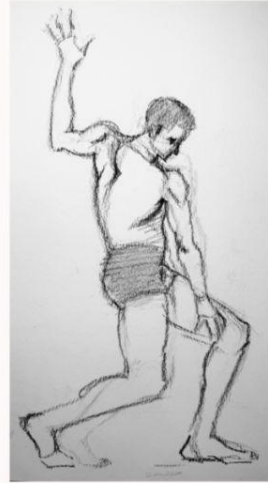
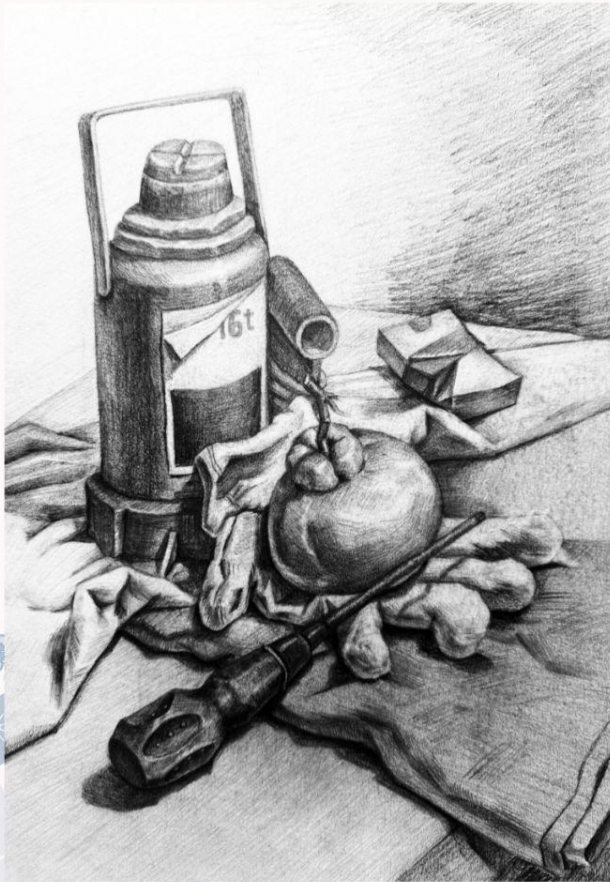
## Thumbnails



# Color comp



# Practice & Figure drawing



# The Final Flames of the World

Mix Media

Material: Foam ball, wax ,candle , watercolor ,acrylic paint , led light, plastic animal ,rock c air dry clay

Dimensions: 12"X16"

Year: 2024

Description:

Growing up, I witnessed the unfolding reality of climate change and the rapid depletion of Earth' s resources. After reading reports on environmental collapse, I wanted to create a piece that visualized humanity' s impact rather than offering just another abstract warning. The burning candles represent the finite time left for our planet, while the melting wax signifies the physical damage humanity has inflicted on the Earth and the irreversible passage of time. As the flames continue to consume what remains, the work poses a critical question: how much longer can the Earth endure, and how much time do we have before the loss becomes irreparable?

